

Congratulations to the top five small and large schools with the greatest percentage of student participation in the Fitness for Kids Challenge. Each of the winning schools were awarded a \$1,000 health and wellness grant!

Winning Schools*

SMALL SCHOOLS**

% of student participation

Iroquois Central School District- Marilla Primary	100%
Central School District- Marilla Primary	100%
Central School District	100%
Central School District	100%
Central School District	100%

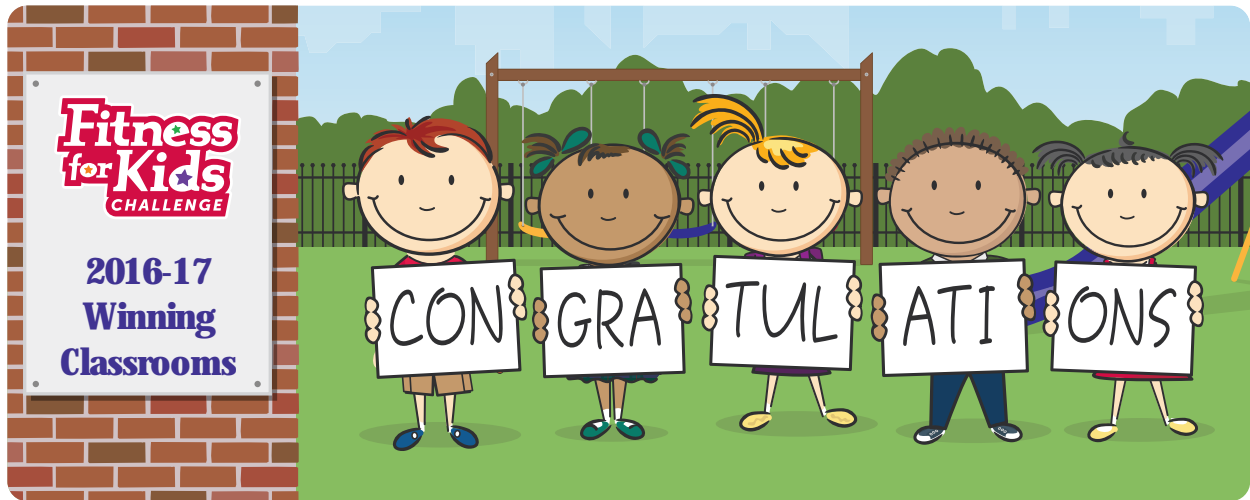
LARGE SCHOOLS**

% of student participation

Niagara-Wheatfield Central School District- Colonial Village Elementary	100%
Buffalo Public School #67- Discovery School	93.11%
Buffalo Public School #79- Pfc. William J. Grabiarsz School of Excellence	88.31%
Sweet Home Central School District- Maplemere Elementary	86.50%
Frederick Law Olmsted School	64.44%

*Rankings are based on student participation throughout the year on each challenge.

**Program enrollment of 180 students or more is considered a large school; program enrollment under 180 students is considered a small school.



Congratulations to the top 40 classrooms with the greatest percentage of student participation in the Fitness for Kids Challenge. Each of the winning classrooms were awarded a \$250 health and wellness grant!

Winning

*

SCHOOLS	TEACHERS	% student participation
Buffalo Public School #197- MST Preparatory School	Ms. Mechelle Williams	100%
Catholic Academy of West Buffalo	Ms. Catherine Frandina	100%
Eden Central School- Grover L. Priess Elementary	Ms. Sandy Wess-Rishel	100%
Hamburg Central School District- Union Pleasant Elementary	Ms. Casey Beuler	100%
Hamburg Central School District- Union Pleasant Elementary	Ms. Jaenea Smith	100%
Hamburg Central School District- Union Pleasant Elementary	Mr. Patrick Wirth	100%
Hamburg Central School District- Union Pleasant Elementary	Ms. Tracy Tone	100%
Lackawanna City School District- Martin Road Elementary	Ms. Lori Zak	100%
Lancaster Central School District- Como Park Elementary	Ms. Adrienne Sadowski	99%
Eden Central School- Grover L. Priess Elementary	Ms. Ashley Mason	98.5%
Lancaster Central School District- Como Park Elementary	Ms. Tracey Ward	98.5%
Iroquois Central School- Wales Primary School	Ms. Kristen Winiecki	98%
Lackawanna City School District- Martin Road Elementary	Ms. Michelle Hamilton	98%
Eden Central School- Grover L. Priess Elementary	Ms. Carol King	97.5%
Orchard Park Central School District- Ellicott Elementary	Ms. Barb Rossi	97.33%
Lackawanna City School District- Martin Road Elementary	Ms. Natalie Oaks	97%
Lackawanna City School District- Martin Road Elementary	Ms. Marilyn Kolatschko	96.67%
Iroquois Central School- Wales Primary School	Ms. Jill Spyropoulos	96%
Lancaster Central School District- Como Park Elementary	Ms. Gwen Rightmyer	95.33%

continued on next page

SCHOOLS	TEACHERS	% student participation
Lancaster Central School District- Como Park Elementary	Ms. Monica Ferreri	95.17%
Iroquois Central School- Wales Primary School	Ms. Heather Murray	94.83%
Stanley G. Falk School- PS 99 Stanley Makowski School	Ms. Lindsay Ricks	94.33%
Eden Central School- Grover L. Priess Elementary	Ms. Ann Preischel	93.33%
Lancaster Central School District- Como Park Elementary	Ms. Sanner	93.17%
Iroquois Central School- Wales Primary School	Ms. Kathryn McHale	92.67%
Lancaster Central School District- Como Park Elementary	Ms. Cheryl Mangione	92.17%
Iroquois Central School- Wales Primary School	Ms. Danielle Weber	92%
Stanley G. Falk School- PS 99 Stanley Makowski School	Ms. Kerry Dorr	91.67%
Stanley G. Falk School- PS 99 Stanley Makowski School	Ms. Christine Maloney	91.67%
Stanley G. Falk School- PS 99 Stanley Makowski School	Ms. Julie Pezzimenti	91.67%
Lackawanna City School District- Martin Road Elementary	Ms. Jill Janus	91.33%
Iroquois Central School- Wales Primary School	Mr. Brian Zybala	91.17%
Lake Shore Central Schools- John T. Waugh Elementary	Mr. John Renzo	91%
Catholic Academy of West Buffalo	Ms. Ashley Scrivani	90%
Orchard Park Central School District- Ellicott Elementary	Ms. Theresa Bermingham	89.83%
Lancaster Central School District- Como Park Elementary	Ms. Nadine Caruso	89.83%
Stanley G. Falk School- PS 99 Stanley Makowski School	Ms. Stephanie Lukacz	88.83%
Stanley G. Falk School- PS 99 Stanley Makowski School	Ms. Sharon Sans	88.83%
Iroquois Central School- Wales Primary School	Mr. Bill Michalek	88.5%
Lancaster Central School District- Como Park Elementary	Ms. Kellie Rowekamp	88.33%

* Rankings are based on student participation throughout the year on each challenge.